













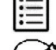
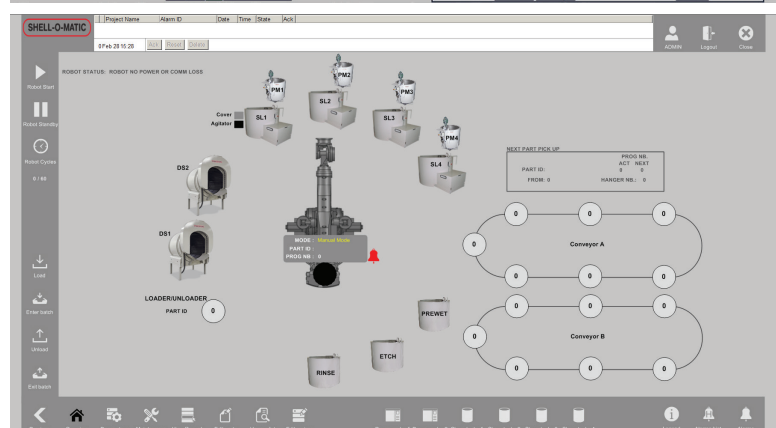
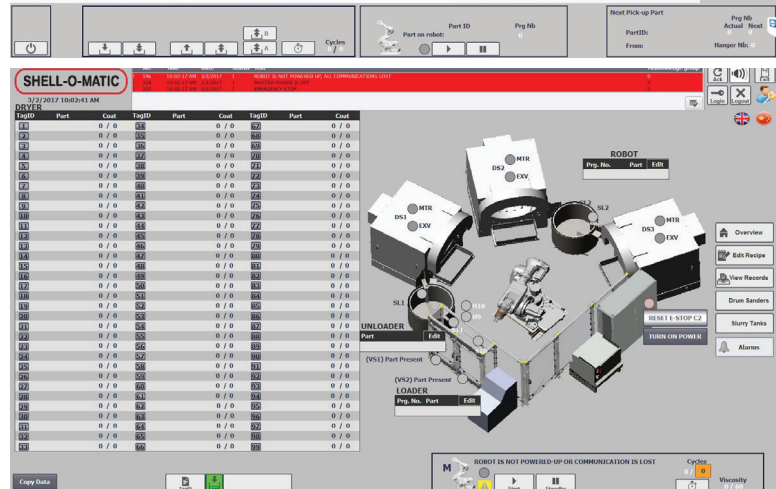
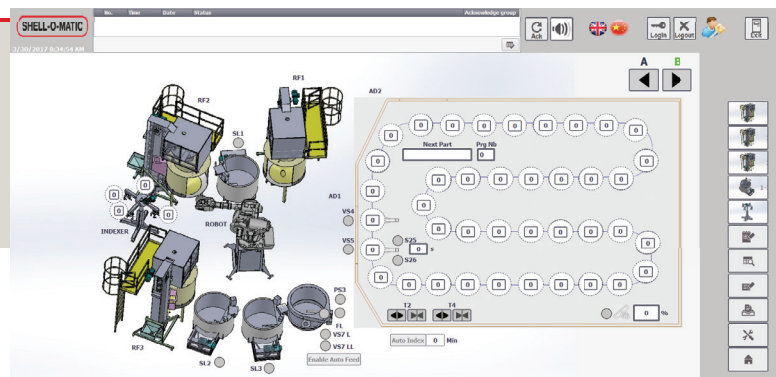
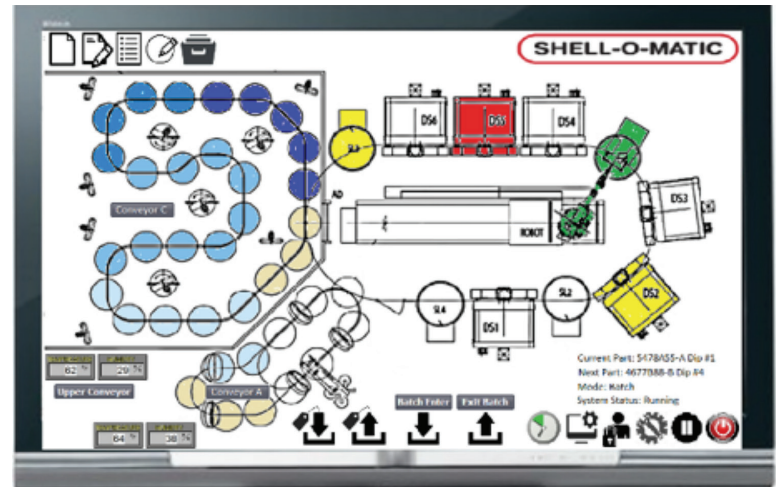


SHELL MANAGEMENT SOFTWARE

The Shell-O-Matic shell management software is designed to be intuitive to use, easing operator navigation.

The following functions are accessible from the main screen:

-  System on/off control
-  System pause/resume
-  Access to maintenance screen (to see I/O status and preventive maintenance)
-  Log-in as a different user
-  Access to the software configuration screen
-  Ability to run the system for a limited number of cycles, then pause
-  Unload a part (or batch, if upper button pressed)
-  Load a part (or batch, if upper button pressed)
-  Unload a work-in-progress part for rework and tag for future re-entry to resume dip sequence
-  Load a reworked tagged part and resume dip sequence where it was left
-  Make a new program (dip sequence)
-  Edit a program
-  View hanger list
-  Edit hanger (can change recipe or dry time)
-  View dip record history



HMI screens

PART TRACEABILITY









The genealogy of raw material and recipe used for old fabrication is critical to master the shell-building process. Our HMI software can offer:

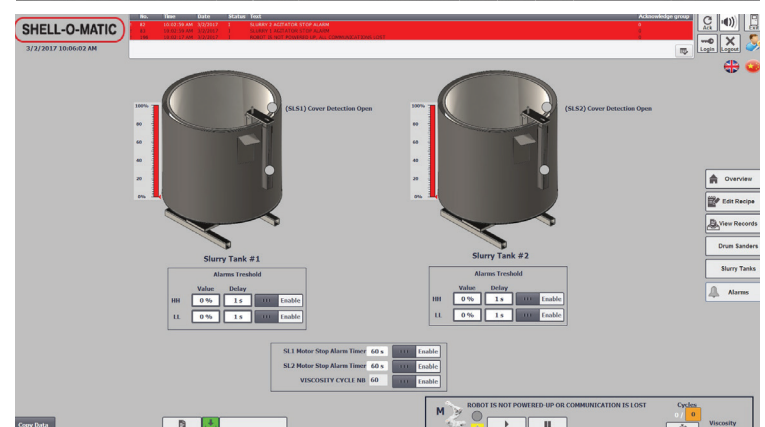
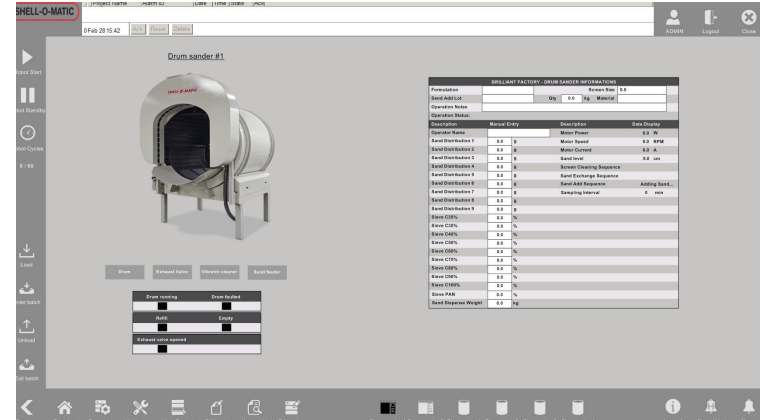
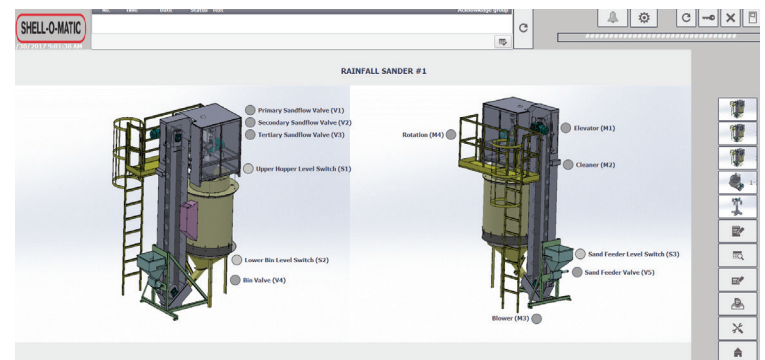
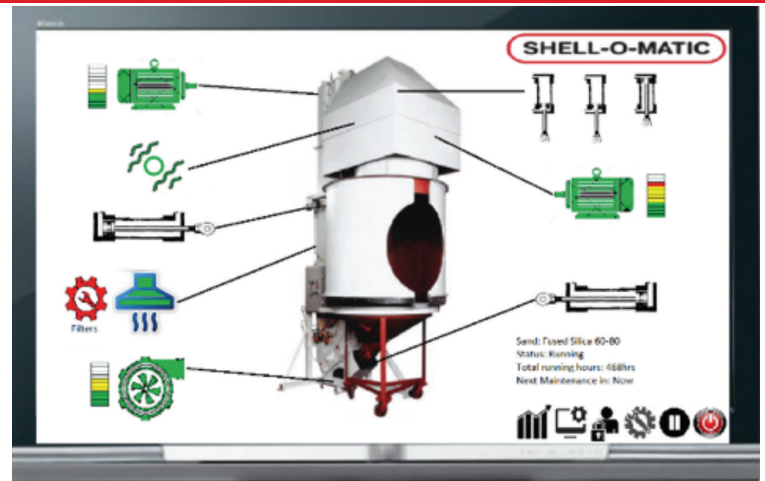
- » Dip record showing the recipe & real drying parameters of the mold
- » Genealogy of slurries and ingredients used to build specific shells
- » Genealogy of sands used in the mold production
- » Periodically recorded slurry parameters
- » Equipment maintenance status as it was building the shells.

EQUIPMENT STATUS

From the main screen, the user can click on any piece of equipment to display its status, including maintenance, and allow for more detailed control.

The equipment screen offers the following information:

-  **Equipment trends**
-  **Motor status** (Icon is green when motor is running and black-and-white if motor is stopped. If equipped with intelligent drive, the system can display drive parameters [speed, load, etc.] using a bar graph)
-  **Shows whether vibrator is running or not**
-  **Indicates the status of the cylinders**
-  **Shows whether the dust collector is running or not**
-  **Indicates the blower status**
-  **Indicates if maintenance is required**
-  **Slurry or sand levels**



Equipment screen