

# RAINFALL SANDER

## APPLYING STUCCO THE EASY WAY

### FEATURES

- » Dense and uniform sand distribution over a large area ensures fast stuccoing.
- » Rapid change-over from one stucco to another; fine or coarse sand.
- » Automatic, continuous sand cleaning is built-in.
- » Clamshell-type swing doors contain dust and sand during stuccoing operation.

The investment casting industry uses fluidized beds or rainfall sanders for the stuccoing of wax patterns.

In many cases it is advantageous to use a rainfall sander:

- » For delicate wax pattern structures which can break in a fluidized bed.
- » When the sand movement in a fluidized bed is too abrasive and thins or removes the ceramic slurry coats.

The previously available rainfall sanders, however, were characterized by several problems, such as:

- » Lean sand rain; slows production time.
- » Creation of additional dust, by using high velocity air systems to elevate the sand.
- » Change-over from one stucco to another is very time consuming or impossible.
- » Lack of an effective sand cleaning system.

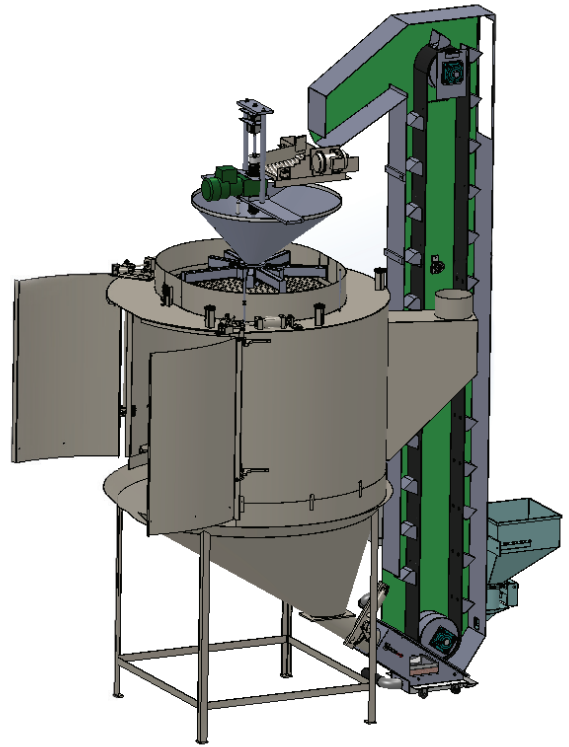
**SHELL-O-MATIC HAS DESIGNED A UNIT THAT EFFECTIVELY RESOLVES THE ABOVE MENTIONED PROBLEMS AND LETS YOU USE ANY NUMBER AND GRADE OF SAND ON A SINGLE MACHINE.**



COMBINATION,  
RAINFALL/FLUIDIZER

## VERTICAL RAINFALL SANDERS WITH RAPID SAND-CHANGE SYSTEM

- » Six sizes
- » Equipped with Rapid Sand Change System



## SANDER WITH VERTICAL DOORS



**CHANGE-OVER FROM ONE STUCCO TO ANOTHER:**

Switch sander on purging cycle and discharge stucco into receiving bin.

- » Disconnect (Quick Coupling) receiving bin from elevator and roll away.
- » Connect another receiving bin with other stucco.

**POWER REQUIREMENTS:**

APPROX. 2KW, 440, 3, 60 HZ.  
550, 3, 60 HZ.  
380, 3, 50 HZ.

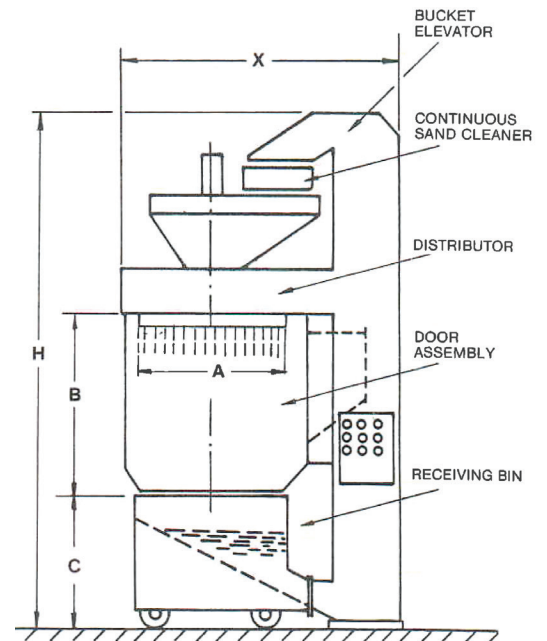
COMPRESSED AIR 80 PSI, (6 BAR) ½ " LINE.

BLOWER AIR 0.5 PSI, 300 CFM  
0.03 BAR, 500 NM<sup>3</sup>/H

**ADDITIONAL FEATURES:**

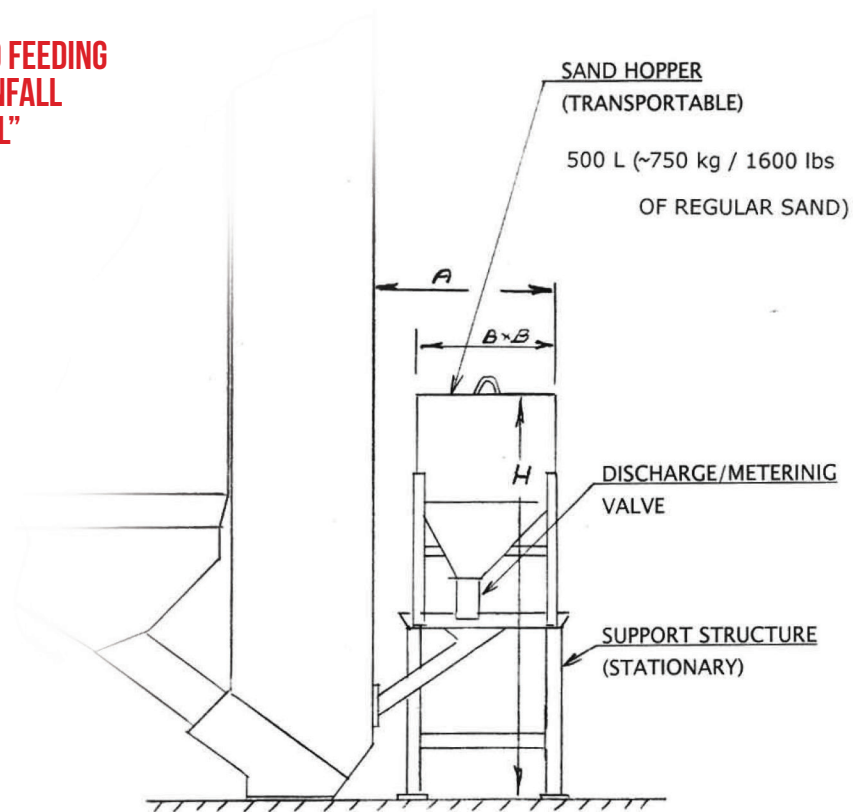
- » Three settings for sandflow, low - medium - high.
- » All logic for automatic operation with robot is built in.
- » Adaptor for dust collector is incorporated.
- » Low power consumption.

	NO. 140		NO. 250		NO. 350		NO. 550		NO. 600	
<b>A</b>	38"	965 mm	48"	1220 mm	58"	1470 mm	64"	1625 mm	77"	1956 mm
<b>B</b>	49"	1255 mm	56"	1422 mm	63"	1600 mm	77"	1956 mm	89"	2260 mm
<b>C</b>	45.5"	1156 mm	51"	1295 mm	60"	1525 mm	76"	1930 mm	82"	2083 mm
<b>H</b>	13'6"	4115 mm	14'6"	4420 mm	16'5"	5000 mm	19'5"	5918 mm	21'4"	6503 mm
<b>X</b>	78"	1960 mm	84"	2134 mm	102"	2600 mm	110"	2794 mm	138"	3505 mm



U.S. Patent N° 4440806  
Other Patents Pending

## AUTOMATIC SAND FEEDING SYSTEM FOR RAINFALL SANDER, TYPE "FL"



## PNEUMATIC SAND FEEDING SYSTEM FOR RAINFALL SANDER

