

# DRUMSANDERS

**THERE ARE MANY SMALL DETAILS THAT MAKE OUR DRUM SANDERS DIFFERENT FROM OUR COMPETITION, STARTING WITH THE FACT THAT WE HAVE THE EXPERTISE TO TWEAK IT TO YOUR NEEDS.**

Give us your sand specs and rain flow requirements and we will tailor the sand rain to your spec, making sure you can adjust the rain flow within a desired range.

Furthermore, we can integrate your sander with automatic sand feeding system so you never run out of sand, thus improving your productivity. We can also offer sand exchange systems, making it easy in your process to switch from one sand type to another. Finally, since most sands used in the investment casting industry create toxic dust, we engineered a dust collection system tested to make sure your workers are safe.

## Standard features

- » Variable speed drive
- » Local start/stop switch
- » Remote start/stop
- » Manual sand feeding

## Optional features

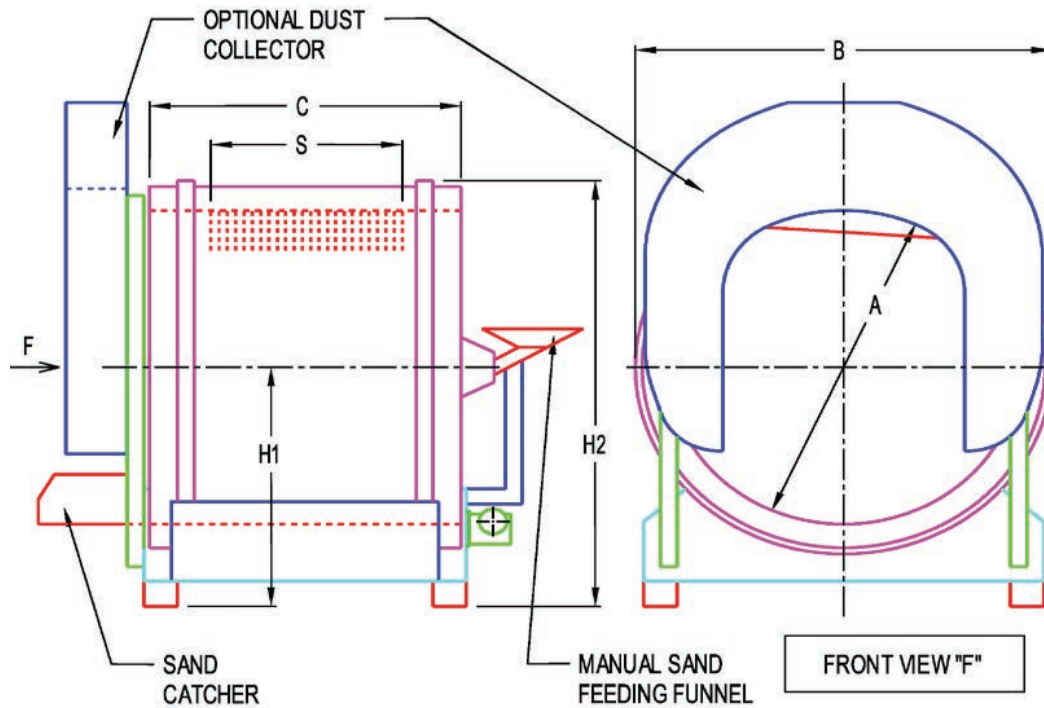
- » Dust collection ring
- » Sand feeding hopper
- » Pneumatic sand feeding
- » Sand weighing system with load cell
- » Rear view window
- » Sand changeover unit  
(use one drumsander with several sands)



Rear view

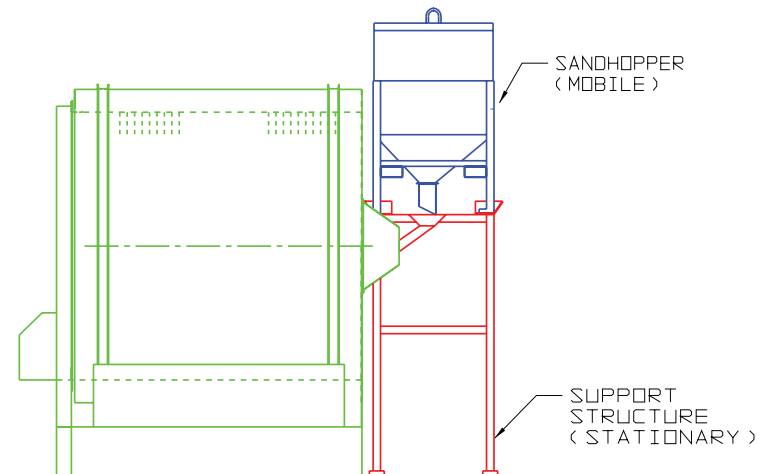


Drum sander for manual operation

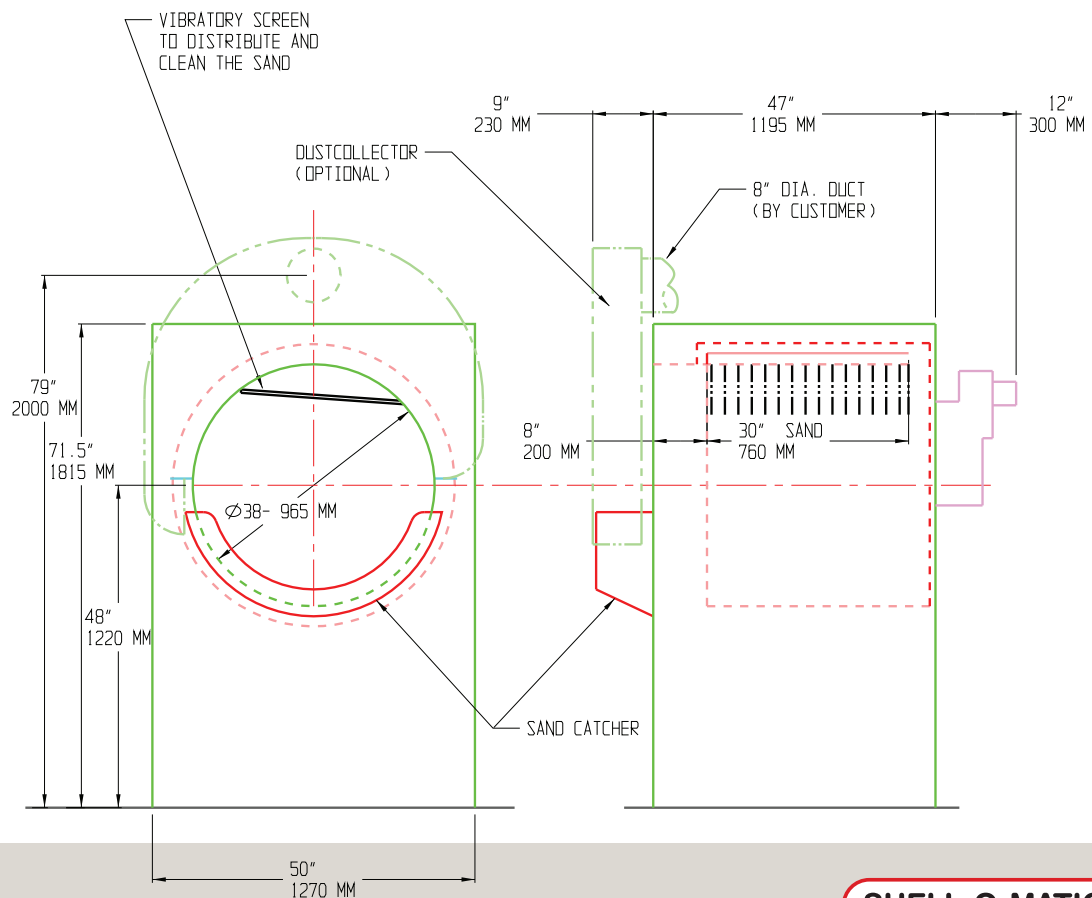


SIZE INSIDE DIA. A	48.0" - 1220 mm	54.0" - 1370 mm	63.0" - 1600 mm	72.0" - 1828 mm	83.0" - 2108 mm
B	64.5" - 1640 mm	69" - 1750 mm	79.5" - 2020 mm	86.0" - 2185 mm	100.75" - 2560 mm
S (Sand Rain)	36.0" - 915 mm	39.0" - 990 mm	42.0" - 1067 mm	50.0" - 1270 mm	57.0" - 1450 mm
C	54.0" - 1370 mm	57.25" - 1455 mm	60.5" - 1540 mm	71.5" - 1815 mm	88.0" - 2185 mm
H1 (Minimum)	39.5" - 1005 mm	41.0" - 1040 mm	45.0" - 1143 mm	46.75" - 1190 mm	51.25" - 1302 mm
H2 (Minimum)	71.5" - 1815 mm	75.5" - 1920 mm	85.0" - 2160 mm	91.0" - 2315 mm	101.5" - 2580 mm

## AUTOMATIC SAND FEEDING SYSTEM FOR DRUM SANDER



**DRUMSANDER 38" DIA — 965 MM Ø  
FOR MANUAL OPERATION**



## PNEUMATIC SAND FEEDER

